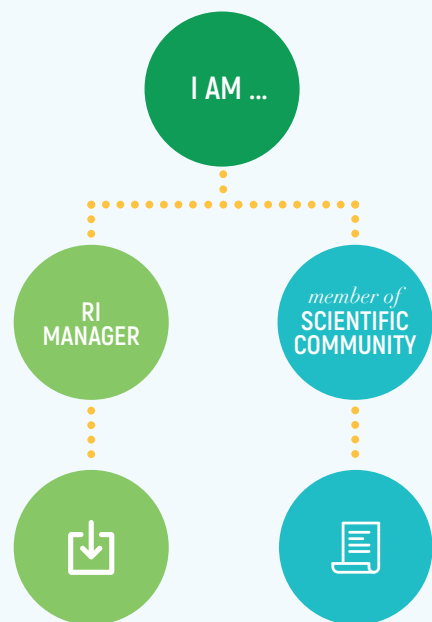


## \_How are RIs included in MERIL?

MERIL is growing every day. We want your input to continuously increase our coverage of the European research infrastructure landscape.

### To suggest an RI:



Download and complete the **Self-Assessment Form**

**Suggest an RI** through [www.meril.eu](http://www.meril.eu)



# MERIL

MAPPING OF THE EUROPEAN  
RESEARCH INFRASTRUCTURE  
LANDSCAPE



### Find out more

Visit [www.meril.eu](http://www.meril.eu)



### Contact us

[meril@esf.org](mailto:meril@esf.org)



### Follow us

@MERILdatabase

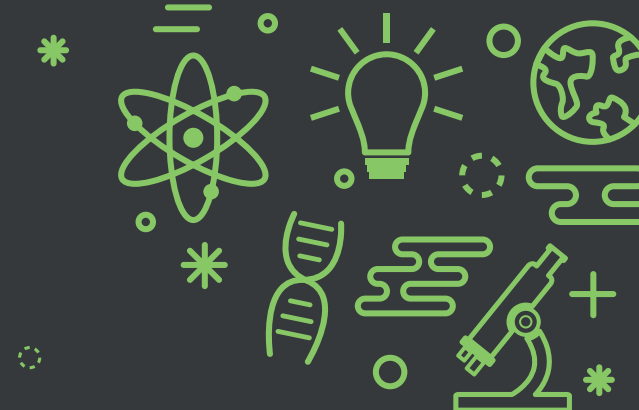


# MERIL

MAPPING OF THE EUROPEAN  
RESEARCH INFRASTRUCTURE  
LANDSCAPE



## The Catalyst for your Research



This project has received funding from the European Union's Horizon 2020 research and innovation programme under grant agreement No 654296

SCIENCE  
CONNECT  
YOUR PARTNER IN SCIENCE

EKT  
EBNKO KENTRO  
TERKIHPOZICE  
NATIONAL  
DOCUMENTATION  
CENTRE

APRE  
Agenzia per la Promozione  
della Ricerca Europea

## \_What is MERIL?

MERIL (Mapping of the European Research Infrastructure Landscape) is a **European coordination and support action** that maps research infrastructures (RIs) in Europe. Through its **online portal**, MERIL provides information on RIs and the services and equipment they offer to external researchers.

The research infrastructures in MERIL cover all scientific domains, including social sciences and humanities. MERIL's growing database includes information on over 1000 research infrastructures across 33 European and Associated Horizon 2020 Countries.

MERIL uses a standardised, bottom-up approach, where RI managers, researchers and National Data Intermediaries supply information on RIs that are eligible to be included in the database.



### \_Meril.eu users

#### +1.5k monthly searches

MERIL users rely on the platform to find the tools and services they need.

#### +90 countries

MERIL's impact goes beyond borders, ensuring international visibility of the research infrastructures on MERIL.

## \_What can you find on MERIL?



### Organisations

Universities, research organisations, national services, foundations...

### Research Infrastructures

Research vessels, telescopes, historical archives, light sources, drop towers, advanced bioimaging facilities, material analysis centres, Earth science laboratories, robotics centres, art research institutes...

### Equipment Items

Supercomputers, synchrotrons, language tree-banks, spectrophotometers, downhole logging tools, electron microscopes, wind tunnels, neutron detectors, gravimeters...

### Services

Anthropological measurements, atmospheric sampling, translational research, x-ray crystallography, stress tests, genetic engineering, environmental toxicology, art conservation, scholarship programmes...

## \_Why use MERIL?

MERIL is publicly accessible and offers information that is useful to a wide range of audiences:

### Researchers

On MERIL, researchers can find a laboratory to analyse their samples, an external centre to hire the equipment they need, or an archive that has the best information for their field of work.



### Infrastructure managers

Inclusion in the MERIL database helps research infrastructures raise their profile within Europe and abroad. It enables the scientific community and European policy makers to recognise the value that each infrastructure represents. MERIL fosters connectivity and collaboration in European research, providing research infrastructures an opportunity to partner, network and exchange information with others.



### Policy makers

The MERIL team conducts data analysis to support policy makers during roadmapping processes. The portal's visualisations tool allows policy makers, EC officials and other interested stakeholders to explore MERIL data and gain insight into the European RI landscape. MERIL's standardised database guarantees the interoperability of its data, and its classification system has been adopted by several national RI databases such as those of Austria, Germany and Korea.

