



Der Wissenschaftsfonds.



## RESEARCH CONFERENCES

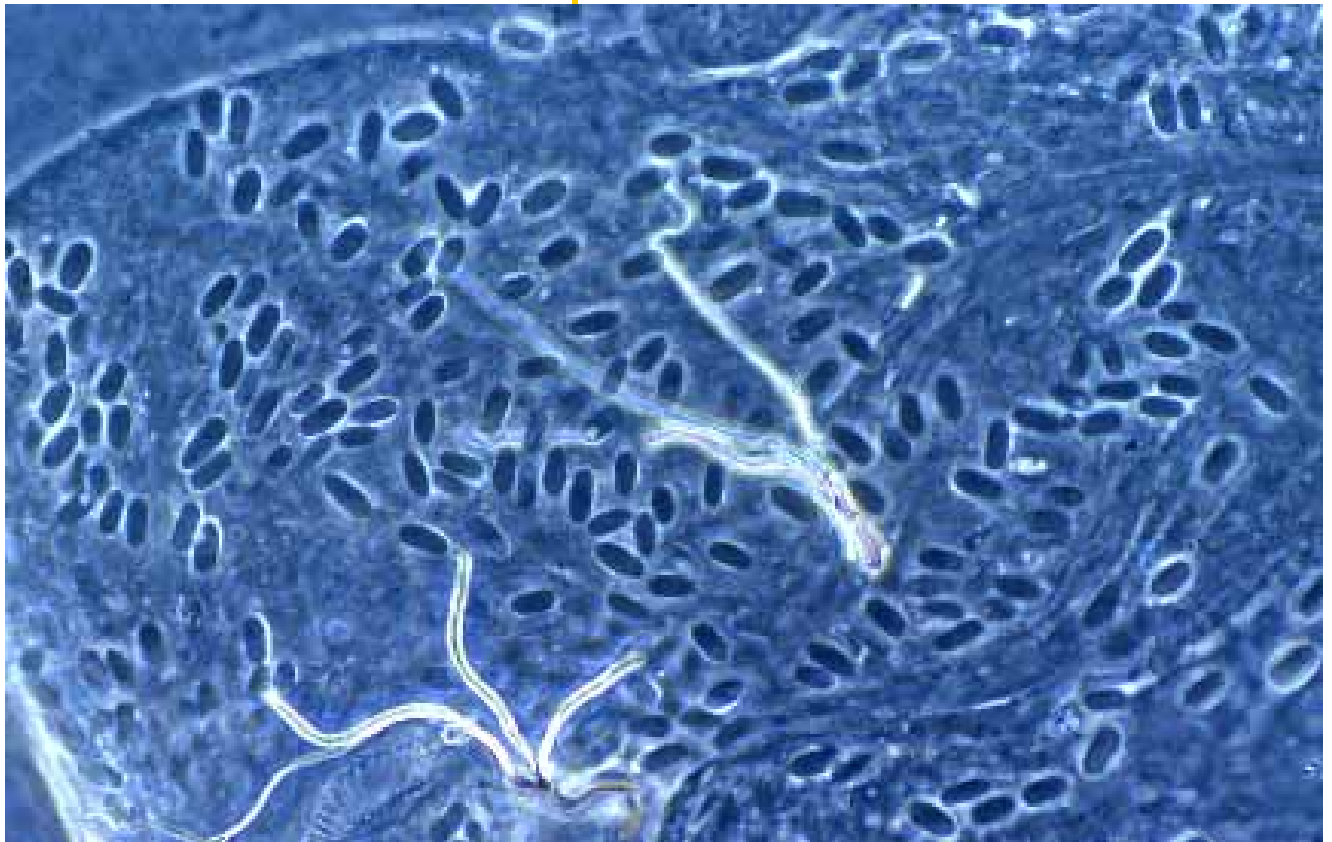
ESF-FWF Conference in Partnership with LFUI

# The Impact of the Environment on Innate Immunity: At the Defence Frontier - The Biology of Innate Immunity

Universitätszentrum Oberurgl  
(Ötz Valley, near Innsbruck) • Austria  
22-27 April 2007

Chair: **Paul Schmid-Hempel** ETH Zürich, CH  
Vice-Chairs: **Joachim Kurtz** Münster University, DE  
& **Sophie Armitage** Copenhagen University, DK

[www.esf.org/conferences/07223](http://www.esf.org/conferences/07223)



[www.esf.org](http://www.esf.org)

# Final Programme

---

## Sunday 22 April

---

Late afternoon / early evening	Registration at the ESF-RC desk
20.00	Welcome Drink
21.00	Supper

## Monday 23 April

---

08.45-09.00	Conference Opening
-------------	--------------------

### On Cells and Molecules

09.00-09.45	<b>Kenneth Söderhäll</b> Uppsala University, SE <i>Blood cell differentiation in a crustacean</i>
09.45-10.30	<b>Tina Trenczek</b> University of Giessen, DE <i>Windows to an understanding of lepidopteran immune reactions - on hemocytes and molecules in Manduca sexta</i>
10.30-11.00	Coffee Break
11.00-11.45	<b>Bruno Lemaître</b> CNRS Gif-sur-Yvette, FR; EPFL Lausanne, CH <i>Sensing and bacterial tolerance at the gut epithelium surfaces of Drosophila</i>
11.45-12.30	<b>Polly Matzinger</b> NIH Bethesda, US <i>Conversations between tissues and dendritic cells</i>
12.30	Lunch

### Ecology Matters

14.00-14.45	<b>Andrew Read</b> Edinburgh University, UK <i>Environmental influences on immunity in mosquitoes</i>
14.45-15.30	<b>Dieter Ebert</b> University of Basel, CH <i>Coevolution in the Daphnia - microparasite system</i>
15.30-16.00	Coffee Break
16.00	Group Discussions (Topics 1. On Cells and Molecules; 2. Ecology Matters)
17.00	Poster Session I / Social Hour
19.30	Dinner

## Tuesday 24 April

---

### How to be Specific?

- 09.00-09.45 **Dan Hultmark**  
Umea University, SE  
*The specificity problem in Drosophila immunity*
- 09.45-10.30 **Dietmar Schmucker**  
Harvard University, US  
*Hypervariable Ig-receptors in invertebrate immunity*
- 10.30-11.00 Coffee Break
- 11.00-11.45 **George Dimopoulos**  
John Hopkin University, US  
*Pattern recognition receptor diversity in Anopheles gambiae*
- 11.45-12.30 **Sam Loker**  
University of New Mexico, US  
*Parasites as elicitors and modulators of invertebrate immune responses: trematodes and snails as a model system*
- 12.30 Lunch

### Physiology and Function

- 14.00-14.45 **Shelley Adamo**  
Dalhousie University, CA  
*Why flight-or-fight can make you sick: the consequences of intertwined physiological systems*
- 14.45-15.30 **Jens Rolff**  
University of Sheffield, UK  
*Why did the vertebrate adaptive immune system evolve?*
- 15.30-16.00 Coffee Break
- 16.00 Group Discussions (Topics 1. How to be Specific?; 2. Physiology and Function)
- 17.00 Poster Session II / Social Hour
- 19.30 Dinner

## Wednesday 25 April

---

### What Theory tells us

- 09.00-09.45 **Steve Frank**  
UC Irvine, US  
*Within-host dynamics of antigenic variation*
- 09.45-10.30 **Mike Boots**  
University of Sheffield, UK  
*Ecological feedbacks in the evolution of resistance to disease*
- 10.30-11.00 Coffee Break
- 11.00-11.45 **Rustom Antia**  
Emory University, US  
*What determines the virulence of malaria?*

11.45-12.30	<b>Brian Lazzaro</b> Cornell University, US <i>Quantitative genetics of antibacterial immunity in Drosophila</i>
12.30	Lunch
Afternoon	Free leisure time
17.00	Poster Session III / Social Hour
19.30	Dinner

## Thursday 26 April

### Sex and Evolution

09.00-09.45	<b>Marlene Zuk</b> UC Riverside, US <i>The necessary microbe: coevolution and immunity</i>
09.45-10.30	<b>Mike Siva-Jothy</b> University of Sheffield, UK <i>Innate immunity and sex: coping when things get nasty</i>
10.30-11.00	Coffee Break
11.00-11.45	<b>Tom Little</b> Edinburgh University, UK <i>Molecular evolution of immune system genes</i>
11.45-12.30	<b>Hinrich Schulenburg</b> University of Tübingen, DE <i>Evolution of innate immunity in the nematode, Caenorhabditis elegans</i>
12.30	Lunch

### Social Life

14.00-14.45	<b>Rebeca Rosengaus</b> Northeastern Univ., US <i>Amplifying immunocompetence within a social environment: how do termites do it?</i>
14.45-15.30	<b>Paul Schmid-Hempel</b> ETH Zürich, CH
	<b>Joachim Kurtz</b> University of Münster, DE
	<b>Sophie Armitage</b> University of Copenhagen, DK <i>Final address: Where do we stand and which way forward?</i>
15.30-16.00	Coffee Break
16.00	Forward Look Plenary Discussion
17.00	Group Discussions (Topics 1. What Theory tells us; 2. Sex and Evolution; 3. Social Life)
19.30	Get-together & Conference Dinner

## **Friday 27 April**

---

Breakfast & Departure

### **Abstracts, Posters & Short Oral Presentations**

---

There will be NO short talks. All abstracts are accepted as POSTERS.

The list of accepted posters is available from [www.esf.org/conferences/07223](http://www.esf.org/conferences/07223).

Posters can be fixed with magnets and pins onto poster panels. Recommended poster size is 140 cm high x 100 cm wide. Use letters and drawings that can be read from approximately 100 cm distance.