



MERIL

MAPPING OF THE EUROPEAN
RESEARCH INFRASTRUCTURE
LANDSCAPE

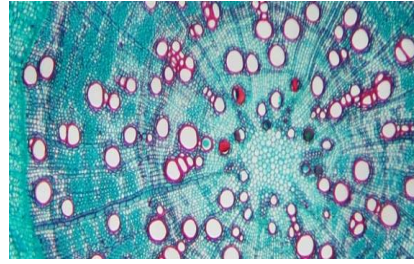
MERIL/MOFRI Final workshop

Strasbourg, 12-13 Nov. 2012

Dr Jean Béhue

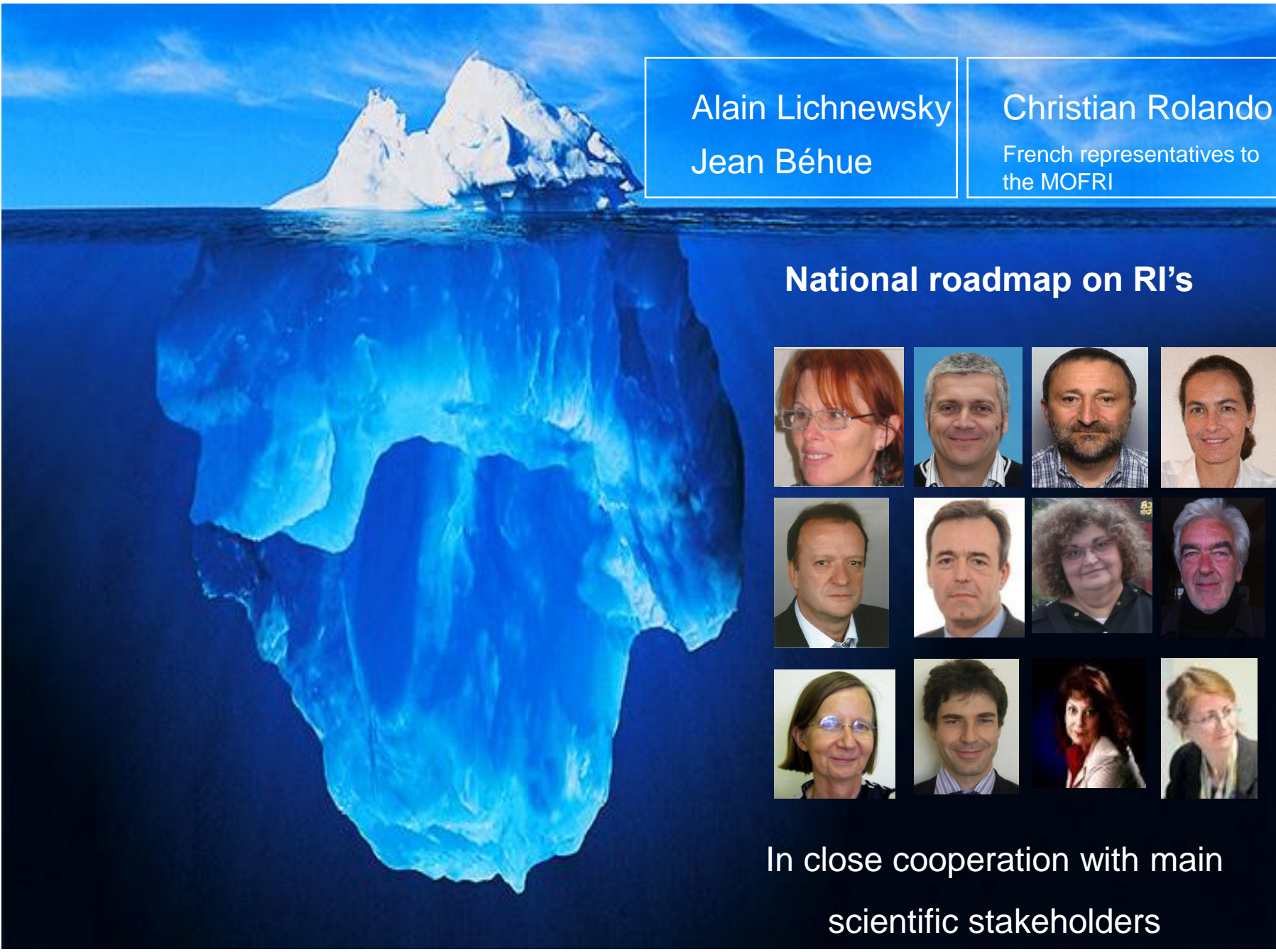
Ministry of Higher Education and Research, France

1. French roadmap on RI's: objectives
2. The means of our action: organization
3. MERIL: a strategic tool for UE Ministries



France at MERIL: a team work



A large iceberg floats in the ocean. The tip of the iceberg is visible above the water surface, while the much larger, submerged part is visible below. The sky is blue with some clouds.

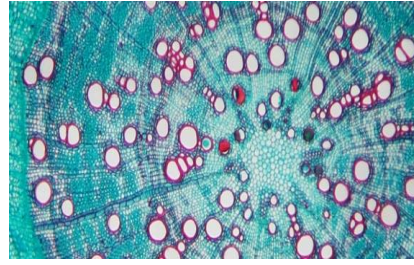
Alain Lichnewsky
Jean Béhue

Christian Rolando
French representatives to
the MOFRI

National roadmap on RI's



In close cooperation with main
scientific stakeholders



French national roadmap on RI's: objectives



Some key drivers in strategy design

1. Taking into account the diversification of research infrastructures

A Research Infrastructure may be:

- a localized infrastructure

But also

- a platform network
- a virtual research infrastructure, or a network
- a collection, a scientific library, archives
- a human networks of very high scientific value

Some key drivers in strategy design

2. Identifying « Research Infrastructures », through criteria as objective as possible

A Research Infrastructure should:

- be unique
- conduct specific research
- possess an identified governance
- be open and accessible on the basis of scientific excellence
- have a financing plan and be able to present a consolidated budget
- maintain privileged links with the economic sector

Some key drivers in strategy design

3. Interdisciplinarity: aligning each RI with scientific disciplines, but also with our national strategic challenges

For instance: GENCI-PRACE (performance computing)

Disciplines
Nuclear &...
Material & ...
Digital &...
Earth & ...
Planetary &...
Agronomy & ...
Biological & ...
Humanities &...
Documentation.



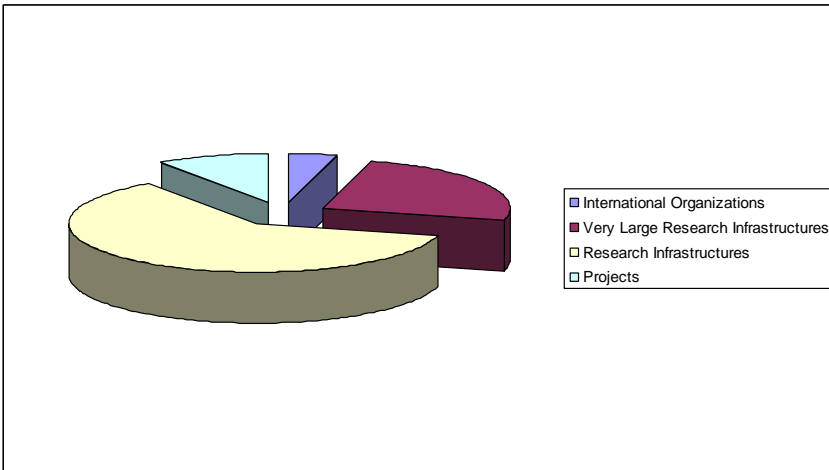
Strategic challenges
Information Systems
Health
Energy
Environment

In the end: 6 Strategic objectives



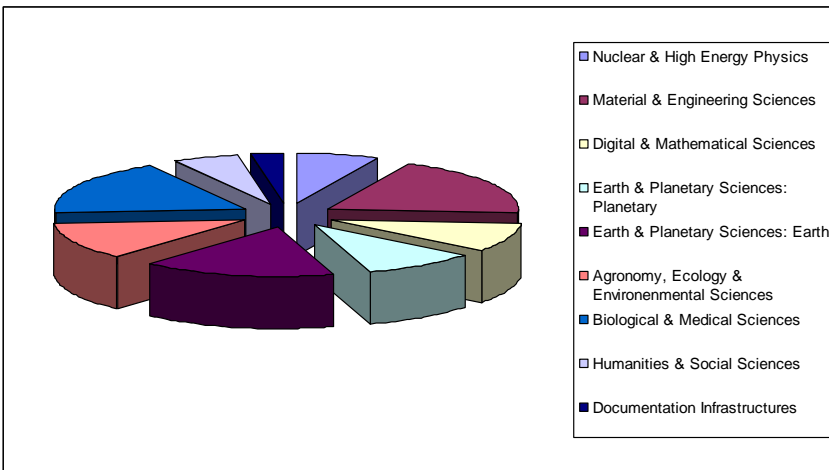
1. Promoting knowledge and basic sciences in all areas
2. Serving the societal challenges
3. Playing a leading role in the development of infrastructures at the european level
4. Maintaining a strong implication in international organizations
5. Strenghtening partnerships with economic stakeholders
6. Ensuring an efficient budget monitoring

French roadmap 2013

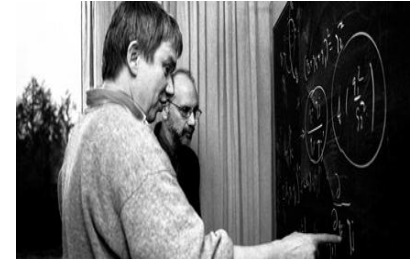
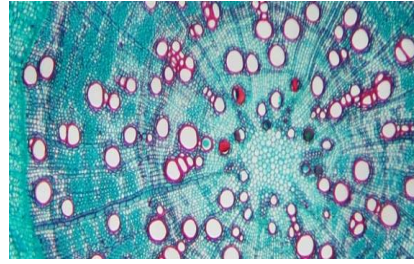


73 research infrastructures

- International Organizations: 3
- Very Large Research Infrastructures: 18
- Research Infrastructures: 45
- Projects: 7



- Nuclear & High Energy Physics: 5
- Material & Engineering Sciences: 14
- Digital & Mathematical Sciences: 7
- Earth & Planetary Sciences: Planetary: 7
- Earth & Planetary Sciences: Earth: 12
- Agronomy, Ecology & Environmental Sciences: 9
- Biological & Medical Sciences: 13
- Humanities & Social Sciences: 4
- Documentation Infrastructures: 2



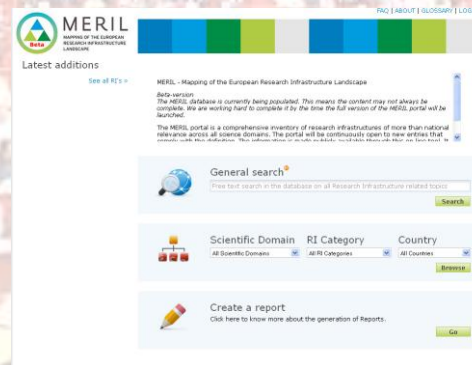
The means of our action: new organization



The means of our action

- A strong governance, for a sustainable vision
 - Thematic coordination committees: scientific communities --> scientific directions
 - Higher council of VL RI's: key stakeholders → prospective
 - Steering committee: MESR + Foreign Affairs + key stakeholders → decisions
 - Interministerial work: Ministries of Research + Foreign Affairs + Budget → implementation
- A set of objective criteria, for firm decisions
 - Classification: international organizations, very large RI's, RI's
 - Prerequisites: strategy, dedicated structures of governance, pluri-annual budget plan, budget control etc
- A dynamic process, for a cutting edge research
 - Annual review of the national roadmap
 - Project reviews process management (evaluating new projects of Ris)

MERIL: a strategic tool for UE Ministries



The screenshot shows the MERIL website interface. At the top left is the MERIL logo, which consists of a stylized 'M' and 'L' in a circle, followed by the text 'MERIL' and 'MAPPING OF THE EUROPEAN RESEARCH INFRASTRUCTURE LANDSCAPE'. To the right of the logo are navigation links: 'FAQ', 'ABOUT', 'GLOSSARY', and 'LOGIN'. Below the logo is a 'Latest additions' section with a 'See all RIs >' link. The main content area features a 'General search' section with a search bar and a 'Search' button. Below this are three filter sections: 'Scientific Domain' with a dropdown menu set to 'All Scientific Domains', 'RI Category' with a dropdown menu set to 'All RI Categories', and 'Country' with a dropdown menu set to 'All Countries'. Each filter section has a 'Remove' button. At the bottom of the interface is a 'Create a report' section with a 'Go' button.

MERIL...

- was a very useful initiative
- had been a forum for strategic discussions regarding RI's
- has emerged as a strategic tool to the service of scientific communities and governments
- is a new and clearly identified actor in the landscape of institutions interested with RI's (MO Forum, ESFRI, ERF, GSF/OECD, UE DG Research, Governments, scientific communities etc).



MERIL is a tool that...

- will provide pertinent, revised and up-to-date data on RI's
- will support the development of new indicators
- will help the national as well as the european programming
- will enable the development of a european union of research infrastructures



Keeping it as a strategic tool

- The MERIL database should :
 - integrate new RI's, at an acceptable rate
 - be revised on the basis of objective criteria
 - be administrated hand in hand with national intermediaries
 - enable the export of data, in order to make possible analysis
- The future of the tool should be discussed at a scientific and a political level

MERIL in the future

OPTIONS

- 1 Adding new RIs to the database, collecting new data, and extending the functionalities of the database ?
- 2 Profiting from an ever-actualized database of RI and a reliable portal, from our different perspectives ?

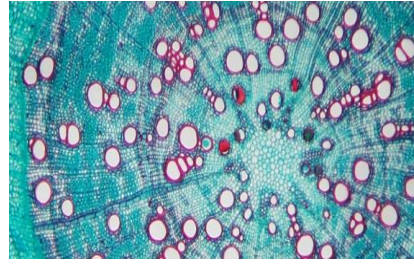
DEPENDING ON

- what we are expecting from the MERIL portal
- our financial possibilities

A SOLUTION COULD BE TO « WAIT AND SEE » DURING 1 OR 2 YEARS

- actualizing the database and maintaining the portal, and thus considering its real contribution, before thinking about potential new developments





Many thanks to the MERIL team and especially to Paul Beckers for their strong commitment, their continuous support, and their contribution to the advancement of the european research

